

CTSS Antibody (Center)
Purified Rabbit Polyclonal Antibody (Pab)
Catalog # AP7382c**Specification**

CTSS Antibody (Center) - Product Information

Application	FC, IHC-P, WB,E
Primary Accession	P25774
Reactivity	Human
Host	Rabbit
Clonality	Polyclonal
Isotype	Rabbit IgG
Calculated MW	37496
Antigen Region	210-240

CTSS Antibody (Center) - Additional Information**Gene ID** 1520**Other Names**

Cathepsin S, CTSS

Target/Specificity

This CTSS antibody is generated from rabbits immunized with a KLH conjugated synthetic peptide between 210-240 amino acids from the Central region of human CTSS.

Dilution

FC~~1:10~50

IHC-P~~1:50~100

WB~~1:1000

E~~Use at an assay dependent concentration.

Format

Purified polyclonal antibody supplied in PBS with 0.09% (W/V) sodium azide. This antibody is prepared by Saturated Ammonium Sulfate (SAS) precipitation followed by dialysis against PBS.

Storage

Maintain refrigerated at 2-8°C for up to 2 weeks. For long term storage store at -20°C in small aliquots to prevent freeze-thaw cycles.

Precautions

CTSS Antibody (Center) is for research use only and not for use in diagnostic or therapeutic procedures.

CTSS Antibody (Center) - Protein Information**Name** CTSS

Function Thiol protease. Key protease responsible for the removal of the invariant chain from MHC class II molecules and MHC class II antigen presentation (PubMed:[30612035](#)). The bond-specificity of this proteinase is in part similar to the specificities of cathepsin L.

Cellular Location

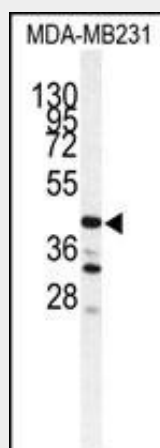
Lysosome. Secreted. Cytoplasmic vesicle, phagosome

CTSS Antibody (Center) - Protocols

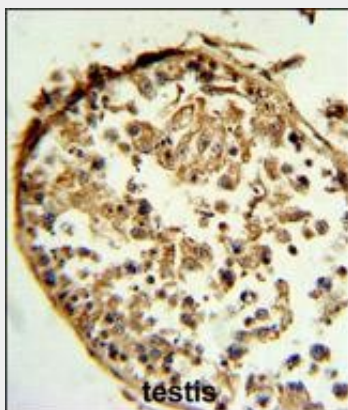
Provided below are standard protocols that you may find useful for product applications.

- [Western Blot](#)
- [Blocking Peptides](#)
- [Dot Blot](#)
- [Immunohistochemistry](#)
- [Immunofluorescence](#)
- [Immunoprecipitation](#)
- [Flow Cytometry](#)
- [Cell Culture](#)

CTSS Antibody (Center) - Images

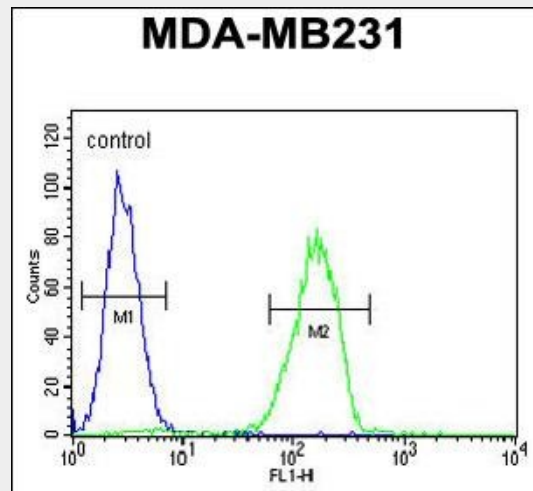


Western blot analysis of CTSS antibody (Center) (Cat.# AP7382c) in MDA-MB231 cell line lysates (35ug/lane). CTSS (arrow) was detected using the purified Pab.



CTSS Antibody (Center) (Cat.# AP7382c) IHC analysis in formalin fixed and paraffin embedded

human testis tissue followed by peroxidase conjugation of the secondary antibody and DAB staining. This data demonstrates the use of the CTSS Antibody (Center) for immunohistochemistry. Clinical relevance has not been evaluated.



CTSS Antibody (Center) (Cat. #AP7382c) flow cytometric analysis of MDA-MB231 cells (right histogram) compared to a negative control cell (left histogram). FITC-conjugated goat-anti-rabbit secondary antibodies were used for the analysis.

CTSS Antibody (Center) - Background

The protein CTSS, a member of the peptidase C1 family, is a lysosomal cysteine proteinase that may participate in the degradation of antigenic proteins to peptides for presentation on MHC class II molecules. The protein can function as an elastase over a broad pH range in alveolar macrophages.

CTSS Antibody (Center) - References

Lindahl, C., Cancer Genomics Proteomics 6 (3), 149-159 (2009)
 Bunatova, K., Int. J. Biol. Markers 24 (1), 47-51 (2009)